

Provena Medical Building

Building Rendering

Provena Medical Building
7000 Caton Farm Road
Plainfield, Illinois

Facts & Features:

- 35,000 SF, Single-Story Medical Office Building
- Part of Provena Health's "Building Excellence" Commitment to Providing Community-Based Services in Neighborhoods Where Patients Live
- Created Through Provena to Assist Affiliated Practices in Expanding Care To the Fastest-Growing Market at the Most Competitive Price Point
- One-Stop Healthcare Services for Patient & Physician Convenience
- Practice Development Opportunity for Medical Staffs of: Provena - Saint Joseph Medical Center in Joliet and Provena Mercy Center in Aurora
- Clinical Objectives: Efficient & Quality Healthcare in a Patient-Centered Environment
- Medical Office Space Controls Bottom-Line Costs & Supports Top-Line Revenue Growth With Value-Added Services
- Tenant Marketing Via Dedicated Website & Other Media
- Ample Surface Parking
- Security System With 24-Hour, 7-Day a Week Access
- Convenient Setting for Full Outpatient Care, Diagnostic & Convenient Care



ALTER+CARE®

John H. Driscoll
5500 West Howard Street
Skokie, Illinois 60077
TEL (800) 637-4842
(847) 676-4300
FAX (847) 676-4325
NET alter-care.com

LEASING REPRESENTATIVES

John Coleman
Jeff Ludwig
1980 Springer Drive
Lombard, Illinois 60148
TEL (630) 620-3600
FAX (630) 620-3606
NET alter-care.com



Provena Medical Building

Location Map & Site Plan

Provena Medical Building
7000 Caton Farm Road
Plainfield, Illinois

Facts & Features:

- Convenient to Illinois Highway 7
- Located Near I-55 & I-80 in a High-Growth Residential Market
- Convenient to Illinois Highway 7 Interchange at I-80
- Convenient to Illinois Highway 52 Interchange at I-55
- Easily Accessible to Residents of Joliet, Will, Grundy, LaSalle & Southern DuPage Counties
- Convenient Setting for Full Outpatient Care, Diagnostic & Convenient Care
- Ample Surface Parking
- Convenient, Sheltered Patient Drop-Off Area



ALTER+CARE®

John H. Driscoll
5500 West Howard Street
Skokie, Illinois 60077
TEL (800) 637-4842
(847) 676-4300
FAX (847) 676-4325
NET alter-care.com

LEASING REPRESENTATIVES

John Coleman
Jeff Ludwig
1980 Springer Drive
Lombard, Illinois 60148
TEL (630) 620-3600
FAX (630) 620-3606



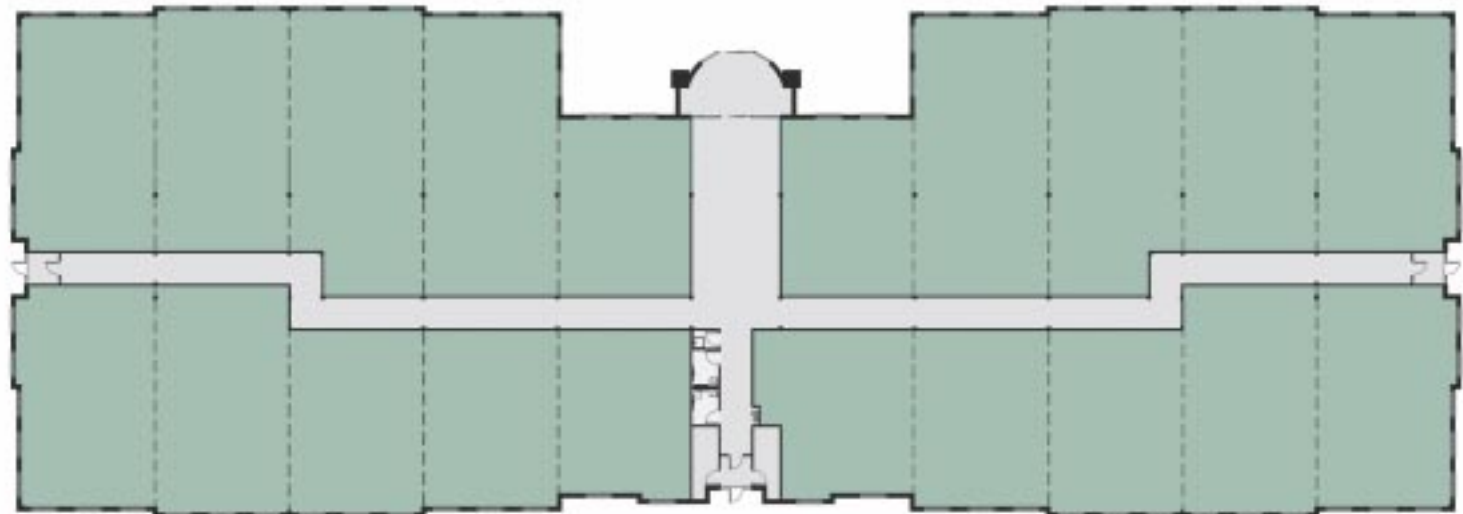
Provena Medical Building

First Floor Plan

Provena Medical Building
7000 Caton Farm Road
Plainfield, Illinois

Facts & Features:

- Professional Medical Office Building of the Future
- Complementary Tenant Planning to Support Medical "Town Square" Concept
- Designed to Support Advanced Infrastructure for 21st Century Record/Image Storage & EMR
- Aesthetically Designed to Effectively Compete with Edward Hospital's Plainfield Expansion Plan While Controlling Costs
- Full Barrier-Free Access & Identifiable Building Entry in Accordance with Americans with Disabilities Act (ADA)
- Brick Veneer Building Exterior
- Ease of Pedestrian & Vehicular Access
- Targeted Services Include:
 - Pharmacy
 - Laboratory
 - Imaging (CT Scan, Ultrasound, MRI & Fluoro)
 - General Radiology
 - Convenient Care
 - Sleep-Disorder Clinic
 - Physical & Occupational Therapy
 - Café



ALTER+CARE®

John H. Driscoll
5500 West Howard Street
Skokie, Illinois 60077
TEL (800) 637-4842
(847) 676-4300
FAX (847) 676-4325
NET alter-care.com

LEASING REPRESENTATIVES

John Coleman
Jeff Ludwig
1980 Springer Drive
Lombard, Illinois 60148
TEL (630) 620-3600
FAX (630) 620-3606

